

TM 5-4310-270-25P

DEPARTMENT OF THE ARMY TECHNICAL MANUAL

ORGANIZATIONAL, DIRECT AND GENERAL SUPPORT,
AND DEPOT MAINTENANCE REPAIR PARTS
AND SPECIAL TOOLS LIST

COMPRESSOR, ROTARY, POWER DRIVEN,
AIR, TWO IMPELLER, WHEELBARROW
FRAME MOUNTED, TWO PNEUMATIC
TIRES, GASOLINE ENGINE,
60 CFM, 6.5 PSI

[FULLER MODEL 2MSWB]

FSN 4310-906-8994



HEADQUARTERS, DEPARTMENT OF THE ARMY
MARCH 1969

CHANGE

NO. 1

}

HEADQUARTERS
DEPARTMENT OF THE ARMY
Washington, D. C., 25 May 1970

**Organizational, Direct and General Support, and Depot Maintenance
Repair Parts and Special Tools List**

**COMPRESSOR, ROTARY, POWER DRIVEN, AIR, TWO IMPELLER,
WHEELBARROW FRAME MOUNTED, TWO PNEUMATIC TIRES,
GASOLINE ENGINE 60 CFM, 6.5 PSI, (FULLER MODEL 2MSWB)
FSN 4310-906-8994**

Current as of 23 April 1970

TM 5-4310-270-25P, 5 March 1969 is changed as follows:

All Changes, additions, or deletions of Federal Stock Numbers or Manufacturer's Part Numbers within these changes should be appropriately reflected in the index.

Section IV and V change, add or delete as shown on the following pages.

Page	Line	Action	(1) Smr Code Index No.	(2) Federal Stock Number	(3) Description Reference No. & Mfr. code	(4) Unit of Issue	(5) Qty Inc In Unit Pack	(6) Qty Inc In Unit	(7) 30-Day DS Maint Allowance			(8) 30-Day GS Main Allowance			(9) 1-Yr Alw Per 100 Equip Cntgcy	(10) Depot Maint Alw- Per 100 Equip	(11) Illus- tration	
									(a)	(b)	(c)	(a)	(b)	(c)			(a)	(b)
									1- 20	21- 50	51- 100	1- 20	21- 50	51- 100			Fig No.	Item No.
10	00016	ch colm 1 & 3; delete colm 2, 7, 8, 9, and 10	MO		SECTION V-REPAIR PARTS FOR DS, GS, AND DEPOT MAINTENANCE 0306-TANKS, LINES, FITTINGS LINE ASSEMBLY FUEL (30327) 913-67-9-6000-79													
	00017	ch colm 1 & 3; Add colm 2, 7, and 8, delete colm 4 and 6	PO	4730-956-5238	MANUFACTURE FROM: ELBOW, 2 ea				*	*	*	*	*	*				
	00018	ch colm 1 & 3; Add colm 2, 7, and 8, delete colm 4 and 6	PO	4710-916-7092	TUBING, 22 in. required				*	*	*	*	*	*				
	00020	ch colm 1; ch Part No. colm 3; delete colm 7, 8, 9, and 10	X20	2910-101-4803	STRAP*** (58626) 913-66-3-0790-79													
15	00086A	Add	PF		5004-PISTONS, CONNECTING RODS, AND ROTORS IMPELLER ASSEMBLY, MATCHED SET (58626) 900-69-3-0226-02	EA	1		*	*	*	*	*	*	5	6		
	00086B	Add	X1	4310-018-2483	SHAFT ASSEMBLY, LONG: impeller (58626) 900-66-3-0690- 02	EA	1										3	13
	00086C	Add	X1	4310-018-2484	SHAFT ASSEMBLY, SHORT: impeller (58626) 900-66-3- 0691-02	EA	1										3	20
	00097	Delete		4310-018-2483	SHAFT ASSEMBLY*** (58626) 900-66-3-0690-02													
	00098	Delete		4310-018-2484	SHAFT ASSEMBLY*** (58626) 900-66-3-0691-02													

By Order of the Secretary of the Army:

Official:

KENNETH G. WICKHAM,
*Major General, United States Army,
The Adjutant General.*

W. C. WESTMORELAND,
*General, United States Army,
Chief of Staff.*

Distribution:

To be distributed in accordance with DA Form 12-25, Section I, (qty rqr block no. 30) organizational maintenance requirements for Air Compressors, 60 CFM.

TECHNICAL MANUAL }
 No. 5-4310-270-25P }

HEADQUARTERS
 DEPARTMENT OF THE ARMY
 WASHINGTON, D. C., 5 March 1969

**ORGANIZATIONAL, DIRECT AND GENERAL SUPPORT, AND DEPOT MAINTENANCE
 REPAIR PARTS AND SPECIAL TOOLS LISTS**

**COMPRESSOR, ROTARY, POWER DRIVEN, AIR, TWO IMPELLER, WHEELBARROW FRAME
 MOUNTED, TWO PNEUMATIC TIRES, GASOLINE ENGINE, 60 CFM, 6.5 PSI (FULLER MOD-
 EL 2MSWB) FSN 4310-906-8994
 Current as of 28 August 1968**

	Paragraph	Page
SECTION I. INTRODUCTION		
Scope	1	iii
General	2	iii
Explanation of columns	3	iii
Special information	4	v
How to locate repair parts	5	v
Abbreviations	6	v
Federal supply codes for manufacturers	7	v
Recommendations for maintenance manual improvements	8	v
II. PRESCRIBED LOAD ALLOWANCE		
III. SPECIAL TOOLS, TEST AND SUPPORT EQUIPMENT FOR ORGANIZATIONAL MAINTENANCE (NOT APPLICABLE)		
SECTION IV. REPAIR PARTS FOR ORGANIZATIONAL MAINTENANCE		
Group 01. Engine		
0100 Engine assembly		1
03. Fuel System		
0306 Tanks, lines, fittings		1
06. Electrical System		
0615 Radio interference suppression		2
13. Wheels and Tracks		
1311 Wheel assembly		2
15. Frame		
1501 Frame assembly		3
22. Accessory Items		
2202 Accessory items		4
2210 Data plates		5
50. Pneumatic Equipment		
5000 Air compressor assembly		5
5004 Pistons, connecting rods and rotors		6
5007 Compressor drive coupling		6
5008 Air intake filter assembly		7
5009 Unloader system components		7
5015 Air discharge system		7
SECTION V. REPAIR PARTS FOR DS, GS, AND DEPOT MAINTENANCE		
Group 01. Engine		
0100 Engine assembly		9
03. Fuel System		
0306 Tanks, lines, fittings		9
06. Electrical System		
0615 Radio interference suppression		10
13. Wheels and Tracks		
1311 Wheel assembly		11
15. Frame		
1501 Frame assembly		11
22. Accessory Items		
2202 Accessory items		13
2210 Data plates		13

50. Pneumatic Equipment	
5000 Air compressor assembly	14
5001 Crankcase, block, cylinder head	14
5004 Pistons, connecting rods and rotors	14
5005 Valves, camshaft and timing mechanism	16
5007 Compressor drive coupling	16
5008 Air intake filter assembly	16
5009 Unloader system components	17
5015 Air discharge system	17
SECTION VI. SPECIAL TOOLS, TEST AND SUPPORT EQUIPMENT FOR DS, GS, AND DEPOT MAINTENANCE (NOT APPLICABLE)	
VII. FEDERAL STOCK NUMBER AND REFERENCE NUMBER INDEX	25

SECTION I

INTRODUCTION

1. Scope

This manual lists repair parts required for the performance of organizational, direct support, general support, and depot maintenance of the air compressor.

2. General

a. The repair parts list is arranged as follows:

(1) Individual parts and major assemblies are listed alphabetically by item name within the numbered functional groups.

(2) Assembly components and subassemblies are indented and listed alphabetically by item name under major assemblies.

b. This Repair Parts and Special Tools List is divided into the following sections:

(1) *Prescribed Load Allowance (PLA)—Section II.* A consolidated listing of repair parts quantitatively allocated for initial stockage at the organizational level. *This is a mandatory minimum stockage allowance.*

(2) *Special Tools, Test and Support Equipment—Section III.* A list of special tools, test and support equipment authorized for the performance of maintenance at the organizational level. (Not Applicable).

(3) *Repair Parts—Section IV.* A list of repair parts authorized for the performance of maintenance at the organizational level.

(4) *Repair Parts—Section V.* A list of repair parts authorized for the performance of maintenance at the direct support, general support, and depot level.

(5) *Special Tools, Test and Support Equipment—Section VI.* A list of special tools, test and support equipment authorized for the performance of maintenance at the direct support, general support, and depot level. (Not Applicable)

(6) *Federal Stock Number and Reference Number Index—Section VII.* A list of Federal stock numbers followed by reference numbers, appearing in all the listings, in ascending alphanumeric sequence cross-referenced to index number.

3. Explanation of Columns

The following provides an explanation of columns in the tabular lists in sections II through VI.

a. *Source, Maintenance, and Recoverability Codes (SMR).*

Note. Common hardware items known to be readily available in Army supply channels will be assigned Maintenance codes only. Source codes, Recoverability codes, and Maintenance Allowances will not be assigned to this category.

(1) *Source Code.* Indicates the selection status and source for the listed item. Source codes used are:

Code	Explanation
P -----	Applied to repair parts which are stocked in or supplied from DSA/GSA or Army supply system, and authorized for use at indicated categories.
M -----	Applied to repair parts which are not procured or stocked but are to be manufactured at indicated maintenance categories.
A -----	Applied to assemblies which are not procured or stocked as such but made up of two or more units, each of which carry individual stock numbers and descriptions and are procured and stocked and can be assembled by units at indicated maintenance categories.
x -----	Applied to parts and assemblies which are not procured or stocked, the mortality of which is normally below that of the applicable end item, and the failure of which should result in retirement of the end item from the supply system.
x1 ---	Applied to repair parts which are not procured or stocked, the requirement for which will be supplied by use of the next higher assembly or components.
x2 ---	Applied to repair parts which are not stocked. The indicated maintenance category requiring such repair parts will attempt to obtain them through cannibalization; if not obtainable through cannibalization, such repair parts will be requisitioned with supporting justification through normal supply channels.
c -----	Applied to repair parts authorized for local procurements. If not obtainable from local procurement, such repair parts will be requisitioned through normal supply channels with a supporting statement of nonavailability from local procurement.

Code	Explanation
G -----	Applied to major assemblies that are procured with PEMA (Procurement Equipment Missile Army) funds for initial issue only to be used as exchange assemblies at DSU and GSU maintenance level. These assemblies will not be stocked above DSU and GSU level or returned to depot supply level.

(2) *Maintenance Code*. Indicates the lowest category of maintenance authorized to install the listed item. The maintenance level codes are:

Code	Explanation
O-----	Organizational maintenance
F-----	Direct support maintenance
H-----	General support maintenance
D-----	Depot maintenance

(3) *Recoverability Code*. Indicates whether unserviceable items should be returned for recovery or salvage. Items not coded are expendable. Recoverability codes are:

Code	Explanation
R-----	Applied to repair parts and assemblies which are economically repairable at DSU and GSU activities and normally are furnished by supply on an exchange basis.
T-----	Applied to high dollar value recoverable repair parts which are subject to special handling and are issued on an exchange basis. Such repair parts normally are repaired or overhauled at depot maintenance activities.
U-----	Applied to repair parts specifically selected for salvage by reclamation units because of precious metal content, critical materials, high dollar value reusable casings or castings.

(4) This column also lists, below the SMR code, an index number for each item in ascending numerical sequence, which is used to locate items in the publication when the Federal stock number and/or reference number is known.

b. Federal Stock Number. Indicates the Federal stock number for the item.

c. Description. Indicates the Federal item name and any additional description of the item required. A part number or other reference number is preceded by the applicable five-digit Federal supply code for manufacturers in parentheses.

d. Unit of Issue. Indicates the unit used as a basis for issue, e.g., ea, pr, ft, yd, etc.

e. Quantity Incorporated in Unit Pack. Indicates the actual quantity contained in the unit pack.

f. Quantity Incorporated in Unit. Indicates the quantity of the item used in the functional group.

g. Fifteen-Day Organizational Maintenance Allowances.

(1) The allowance columns are divided into four subcolumns. Indicated in each subcolumn opposite the first appearance of each item is the total quantity of items authorized for the number

of equipments supported. Subsequent appearances of the same item will have no entry in the allowance columns but will have in the description column a reference to the first appearance of the item. Items authorized for use as required but not for initial stockage are identified with an asterisk in the allowance column.

(2) The quantitative allowances for organizational level of maintenance represents one initial prescribed load for a 15-day period for the number of equipments supported. Units and organizations authorized additional prescribed loads will multiply the number of prescribed loads authorized by the quantity of repair parts reflected in the appropriate density column to obtain the total quantity of repair parts authorized.

(3) Organizational units providing maintenance for more than 100 of these equipments shall determine the total quantity of parts required by converting the equipment quantity to a decimal factor by placing a decimal point before the next to last digit of the number to indicate hundredths, and multiplying the decimal factor by the parts quantity authorized in the 51-100 allowance column. Example, authorized allowance for 51-100 equipments is 12; for 140 equipments multiply 12 by 1.40 or 16.80 rounded off to 17 parts required.

(4) Subsequent changes to allowances will be limited as follows: No change in the range of items is authorized. If additional items are considered necessary, recommendation should be forwarded to U.S. Army Mobility Equipment Command for exception or revision to the allowance list. Revisions to the range of items authorized will be made by this Command based upon engineering experience, demand data, or TAERS information.

h. Thirty-Day DS/GS Maintenance Allowances.

(1) The allowance columns are divided into three subcolumns. Indicated in each subcolumn, opposite the first appearance of each item, is the total quantity of items authorized for the number of equipments supported. Subsequent appearances of the same item will have no entry in the allowance column, but will have in the description column a reference to the first appearance of the item. Items authorized for use as required but not for initial stockage are identified with an asterisk in the allowance column.

(2) The quantitative allowances for DS/GS levels of maintenance will represent initial stockage for a 30-day period for the number of equipments supported.

(3) Determination of the total quantity of parts required for maintenance of more than 100 of these equipments can be accomplished by con-

verting the equipment quantity to a decimal factor by placing a decimal point before the next to last digit of the number to indicate hundredths, and multiplying the decimal factor by the parts quantity authorized in the 51-100 allowance column. Example, authorized allowance for 51-100 equipments is 40; for 150 equipments multiply 40 by 1.50 or 60 parts required.

i. One-Year Allowances Per 100 Equipments Contingency Planning Purposes. Indicates opposite the first appearance of each item the total quantity required for distribution and contingency planning purposes. The range of items indicates total quantities of all authorized items required to provide for adequate support of 100 equipments for one year.

j. Depot Maintenance Allowance Per 100 Equipments. Indicates opposite the first appearance of each item the total quantity authorized for depot maintenance of 100 equipments. Subsequent appearances of the same item will have no entry in this column, but will have in the description column a reference to the first appearance of the item. Items authorized for use but not for initial stockage are identified with an asterisk in the allowance column.

k. Illustration.

(1) *Figure Number.* Indicates the figure number of the illustration in which the item is shown.

(2) *Item Number.* Indicates the callout number used to reference the item in the illustration.

4. Special Information

a. For repair parts applicable to Gasoline Engine, Model 2A016-111, not covered herein, see TM 5-2805-208-14.

b. Repair parts mortality has been based on 1200 hours of operation per year.

c. Parts which require manufacture or assembly at a category higher than that authorized for installation will indicate in the source column the higher category.

d. The following publications pertain to the compressor and its components:

TM 5-2805-208-14 Organizational, DS and GS Maintenance Manual (including repair parts and special tool lists)

TM 5-4310-270-15 Operator and Organizational, Direct and General Support and Depot Maintenance Manual

5. How to Locate Repair Parts

a. When Federal Stock Number or reference number is unknown:

(1) *First.* Using the table of contents, determine the functional group or subgroup within which the repair part belongs. This will refer to a page in the parts listing.

(2) *Second.* The illustration column of the page refers to a figure to number.

(3) *Third.* Locate the figure and identify the repair parts, noting the item number.

(4) *Fourth.* Refer back to the page of the parts listing. Find the item number in the illustration column that corresponds with the figure number.

b. When Federal Stock number or reference number is known:

(1) *First.* Using the index of Federal stock numbers and reference numbers, find the pertinent Federal stock number or reference number. This index is in ascending alphanumeric sequence cross-referenced to an index number.

(2) *Second.* Using the repair part listing, find the index number referenced in the index of Federal stock numbers and reference numbers.

6. Abbreviations

in-----inch (es)
 mtg ----- amounting
 No. number (s)
 thd -----thread (cd) (s)

7. Federal Supply Codes for Manufacturers

Code	Manufacturer
01292 --	-Allen, W. D. Mfg. Co.
01344 --	-Eon Corp.
22313 ---	Universal Silencer Corp.
30327 ---	Imperial Brass Mfg. Co.
34256 ---	Korfund Dynamics Corp.
34494 ---	Kunkle Valve Co.
36540---	Lisle Corp.
43334 ---	New Departure Division of General Motors Corp.
53477---	Schraders, A and Son Division of Scovill Mfg. Co.
58626 ---	Fuller Co.
71176 ---	Brewing Mfg. Co., Inc.
72661 ---	Dixon Valve and Coupling Co.
78252 --	-Stolper Steel Products Corp.
81348---	Federal Specifications
89341 ---	General Tire and Rubber Co.
96906 --	Military Standards
97403 ---	Engineer Research and Development Laboratory

8. Recommendations for Maintenance Manual Improvements

Report of errors, omissions, and recommendations for improving this publication by the individual user is encouraged. Reports should be sub-

mitted on a DA Form 2028 (Recommended Changes to DA Publications) and forwarded direct to the Commanding General, US, Army Mo-

bility Equipment Command, ATTN: AMSME-MPP, 4300 Goodfellow Boulevard, St. Louis, Mo, 63120.

SECTION II

PRESCRIBED LOAD ALLOWANCE

(1) Federal stock number	(2) Description useable on code	(3) Qty inc in unit pack	(4) 15-Day org maint. alw			
			(A)	(B)	(C)	(D)
			1-5	6-20	21-50	51-100
2910-374-5079	0306—Fuel System CAP, FUEL: Fuel tank (78252) 2302J022 ----- 2202—Accessory Items					2
4310-690-3486	VALVE: inflator (53477) 9927 -----					2
4720-069-9073	HOSE: compressor (81348) ZZH500 -----	2	3	5		10
4730-069-9075	NIPPLE: hose (72661) D006-012 -----			2		2
5330-505-6186	WASHER: hose (72661) AWR4 ----- 5007—Compressor Drive Coupling		2	4		7
3010-854-4927	INSERT, COUPLING: jaw (71176) 66X1010 ----- 5008—Air Intake Filter Assembly					2
4310-069-9257	ELEMENT, FILTER (22313) 81-202 -----	2	4	8		17
5340-062-5466	SPRING, CLIP (22313) 89-101 -----					2
4820-068-5900	5009—Unloader System Components VALVE, RELIEF: manifold (34494) 86CLIN6PS1G -----					2

(1) SMR CODE INDEX NO.	(2) FEDERAL STOCK NUMBER	(3) DESCRIPTION USABLE ON CODE	(4) UNIT OF ISSUE	(5) QTY INC IN UNIT PACK	(6) QTY INC IN UNIT	(7) 15-DAY ORGANIZATIONAL MAINTENANCE ALW				(8) ILLUS- TRATION	
						(a)	(b)	(c)	(d)	(a)	(b)
						1-5	6-20	21-50	51-100	FIG NO.	ITEM NO.
00001		SECTION IV - REPAIR PARTS FOR ORGANIZATIONAL MAINTENANCE									
00001A		GROUP 01 - ENGINE									
00002		0100 - ENGINE ASSEMBLY									
P O T 00003	2805-072-4871	ENGINE ASSEMBLY (97403) 2A016-3	EA		1	*	*	*	*	5	10
P O 00004	2805-022-2632	BRACKET MOUNT: ENGINE (58626) 913-66-2-0785-79	EA		4	*	*	*	*	5	5
0 00005	5310-194-8189	NUT, PLAIN, HEXAGON: ENGINE MTG, 5/16-18 THD SIZE (58626) 913-67-9-5709-79	EA		16					5	6
0 00006	5305-068-0513	SCREW, CAP, HEXAGON HEAD: BRACKET, ENGINE, 1/4-20 THD SIZE, 3/4 IN. LONG (58626) 913-67-5703-79	EA		12					5	7
0 00007	5305-875-6354	SCREW, CAP, HEXAGON HEAD: ENGINE AND BLOWER MTG, 5/16-18 THD SIZE, 1 IN. LONG (58626) 913-67-9-5702-79	EA		16						
0 00008	5310-081-4219	WASHER, FLAT: ENGINE MTG, 5/16 IN. SCREW SIZE (58626) 913-67-9-5713-79	EA		16					5	8
0 00009	5310-010-3320	WASHER, LOCK: ENGINE MTG, 5/16 IN. SCREW SIZE (58626) 913-67-9-5717-79	EA		16						
0 00010	5310-010-3319	WASHER, LOCK: ENGINE BRACKET MTG, 1/4 IN. SCREW SIZE (58626) 913-67-9-5718-79	EA		16					5	9
00011		GROUP 03 - FUEL SYSTEM									
00012		0306 - TANKS, LINES, FITTINGS									
P O 00013	2910-013-9119	TANK, FUEL (78252) 661-3-0793-79	EA		1	*	*	*	*	1	13
P O 00014	2910-374-5079	CAP, FUEL: FUEL TANK (78252) 2302J022	EA		1	*	*	*	2	5	3

(1) SMR CODE	(2) FEDERAL STOCK NUMBER	(3) DESCRIPTION	(4) UNIT OF ISSUE	(5) QTY INC IN UNIT PACK	(6) QTY INC IN UNIT	(7) 15-DAY ORGANIZATIONAL MAINTENANCE ALW				(8) ILLUS- TRATION	
						(a)	(b)	(c)	(d)	(a)	(b)
						1-5	6-20	21-50	51-100	FIG NO.	ITEM NO.
P 0 00015	2910-905-9792	FILTER, FUEL: ENGINE (96906) MS51086-1	EA		1	*	*	*	*	5	12
P 0 00016	2910-101-1795	LINE ASSEMBLY FUEL (30327) 913-67-9-6000-79	EA		1	*	*	*	*	5	13
X1 00017		ELBOW, MALE: FUEL TANK (30327) 269P	EA		2					5	11
X1 00018		TUBING: FUEL LINE (30327) 913-67-9-6001-79	FT		2						
P 0 00019	2910-058-6546	STRAINER: FUEL TANK (78252) 2343B052	EA		1	*	*	*	*	5	4
P 0 00020	2910-101-4803	STRAP: FUEL TANK (58626) 913-66-3-0790-90	EA		4	*	*	*	*	1	14
0 00021	5310-761-6882	NUT, PLAIN, HEXAGON: FUEL TANK, 1/4-20 THD SIZE (58626) 913-67-9-5710-79	EA		4					1	18
0 00022	5305-207-0912	SCREW, CAP, HEXAGON HEAD: FUEL TANK, 1/4-20 THD SIZE 5/8 IN. LONG (58626) 913-67-9-5704-79	EA		4					1	16
0 00023	5310-141-1795	WASHER, FLAT: FUEL TANK, 1/4 IN. SCREW SIZE (58626) 913-67-5-5714-79	EA		8					1	15
0 00024	5310-010-3319	WASHER, LOCK: FUEL TANK, 1/4 IN. SCREW SIZE (58626) 913-67-9-5718-79	EA		16					1	17
00025		GROUP 06 - ELECTRICAL SYSTEM									
00026		0615 - RADIO INTERFERENCE SUPPRESSION									
X20 00027		STRAP, GROUND (58626) 913-66-1-1156-79	EA		1						
00028		GROUP 13 - WHEELS AND TRACKS									
00029		1311 - WHEEL ASSEMBLY									
X20 00030		WHEEL ASSEMBLY (58626) 913-67-9-5900-79	EA		2						4

(1) SMR CODE INDEX NO.	(2) FEDERAL STOCK NUMBER	(3) DESCRIPTION USABLE ON CODE	(4) UNIT OF ISSUE	(5) QTY INC IN UNIT PACK	(6) QTY INC IN UNIT	(7) 15-DAY ORGANIZATIONAL MAINTENANCE ALW				(8) ILLUS- TRATION	
						(a)	(b)	(c)	(d)	(a)	(b)
						1-5	6-20	21-50	51-100	FIG NO.	ITEM NO.
X20 00031		HUB: WHEEL (73808) H2	EA		2					4	6
0 00032	5315-223-6120	PIN, COTTER: WHEEL, 1/4 IN. DIA, 1 1/2 IN. LONG (58626) 913-67-9-5719-79	EA		2					1	11
X20 00033		RIM: WHEEL (73808) R4	EA		2					4	3
0 00034	5306-225-9086	BOLT, MACHINE: WHEEL RIM, 5/16-24 THD SIZE, 5/8 IN. LONG (89341) R4-6A	EA		8					4	5
0 00035	5306-825-0892	BOLT, MACHINE: HUB, 5/16-24 THD SIZE, 3/4 IN. LONG (89341) H2-6A	EA		8					4	7
0 00036	5310-188-3418	NUT, LOCK: HUB, 5/16-24 THD SIZE (89341) R4-6B	EA		16					4	4
P 0 00037	2610-528-9697	TIRE (96906) MS35389-40	EA		2	*	*	*	*	4	2
P 0 00038	2610-174-1792	TUBE (96906) MS35392-121	EA		2	*	*	*	*	4	1
0 00039	5310-298-9226	WASHER, FLAT: WHEEL AXLE, 3/4 IN. SCREW SIZE (58626) 913-67-9-5715-79	EA		4					1	10
00040		GROUP 15 - FRAME									
00041		1501 - FRAME ASSEMBLY									
X20 00042		FRAME CARRIER (58626) 913-66-4-0714-79	EA		1					1	19
P 0 00043	5340-017-6167	SHOCK MOUNT: BLOWER (34256) FB470	EA		4	*	*	*	*	1	7
0 00044	5310-194-8189	NUT, PLAIN, HEXAGON: SHOCK MOUNT, 5/16-18 THD SIZE (58626) 913-67-9-5709-79	EA		8					1	5
0 00045	5305-875-6354	SCREW, CAP, HEXAGON HEAD: SHOCK MOUNT, 5/16-18 THD SIZE, 1 IN. LONG (58626) 913-67-9-5702-79	EA		8					1	12

(1) SMR CODE INDEX NO.	(2) FEDERAL STOCK NUMBER	(3) DESCRIPTION USABLE ON CODE	(4) UNIT OF ISSUE	(5) QTY INC IN UNIT PACK	(6) QTY INC IN UNIT	(7) 15-DAY ORGANIZATIONAL MAINTENANCE ALW				(8) ILLUS- TRATION	
						(a)	(b)	(c)	(d)	(a)	(b)
						1-5	6-20	21-50	51-100	FIG NO.	ITEM NO.
0 00046	5305-061-0358	SCREW, CAP, HEXAGON HEAD: SHOCK MOUNT, 3/8-16 THD SIZE, 3/4 IN. LONG (58626) 913-67-9-5701-79	EA		4					1	2
0 00047	5310-655-6404	WASHER, FLAT: SHOCK MOUNT, 3/8 IN. SCREW SIZE (58626) 913-67-9-5712-79	EA		4					1	4
0 00048	5310-081-4219	WASHER, FLAT: SHOCK MOUNT, 5/16 IN. SCREW SIZE (58626) 913-67-9-5713-79	EA		8					1	23
0 00049	5310-261-7340	WASHER, LOCK: SHOCK MOUNT, 3/8 IN. SCREW SIZE (58626) 913-67-9-5716-79	EA		4					1	3
0 00050	5310-010-3320	WASHER, LOCK: SHOCK MOUNT, 5/16 IN. SCREW SIZE (58626) 913-67-5717-79	EA		8					1	6
0 00051		SUPPORT: BLOWER (58626) 913-66-3-0706-79	EA		1					1	22
0 00052	5310-208-5226	NUT, PLAIN, HEXAGON: BLOWER SUPPORT, 3/8-16 THD SIZE (58626) 913-67-9-5708-79	EA		4					1	25
0 00053	5305-061-0358	SCREW, CAP, HEXAGON HEAD: BLOWER SUPPORT, 3/8-16 THD SIZE, 3/4 IN. LONG (58626) 913-67-9-5701-79	EA		4					1	2
0 00054	5310-261-7340	WASHER, LOCK: BLOWER SUPPORT, 3/8 IN. SCREW SIZE (58626) 913-67-9-5716-79	EA		4					1	3
X20 00055		SUPPORT: ENGINE AND BLOWER (58626) 913-66-4-0715-79	EA		1					1	1
00056		GROUP 22 - ACCESSORY ITEMS									
00057		2202 - ACCESSORY ITEMS									
P 0 00058	4720-071-1749	HOSE ASSEMBLY: COMPRESSOR (58626) 913-66-3-0773-79	EA		2	*	*	*	*	6	
P 0 00059	4730-908-3193	CLAMP: HOSE (96906) MS35842-12	EA		4	*	*	*	*	6	1
P 0 00060	4730-243-1640	COUPLING, FEMALE: HOSE (72661) AM13	EA		2	*	*	*	*	6	2

(1) SMR CODE <hr/> INDEX NO.	(2) FEDERAL STOCK NUMBER	(3) DESCRIPTION USABLE ON CODE	(4) UNIT OF ISSUE	(5) QTY INC IN UNIT PACK	(6) QTY INC IN UNIT	(7) 15-DAY ORGANIZATIONAL MAINTENANCE ALW				(8) ILLUS- TRATION	
						(a)	(b)	(c)	(d)	(a)	(b)
						1-5	6-20	21-50	51-100	FIG NO.	ITEM NO.
P O 00061	4720-069-9073	HOSE: COMPRESSOR (81348) ZZH500	EA		2	2	3	5	10	6	3
P O 00062	4730-069-9075	NIPPLE: HOSE (72661) D006-012	EA		4	*	*	2	2	6	13
P O 00063	4310-069-9074	NOZZLE: HOSE (58626) B3703-1	EA		2	*	*	*	*	6	4
P O 00064	5330-505-6186	WASHER: HOSE (72661) AWR4	EA		7	*	2	4	7		
X20 00065		STRAP: HOSE (01344) BN2468	EA		1						
P O 00066	4310-690-3486	VALVE: INFLATOR (53477) 9927	EA		2	*	*	*	2	6	5
00067		2210 - DATA PLATES									
X20 00068		PLATE: IDENTIFICATION (58626) 913-66-1-1136-79	EA		1					1	8
0 00069	5305-016-4359	SCREW, PAN HEAD, SELF-TAPPING: IDENTIFICATION PLATE MTG, No. 8-32 THD SIZE, 1/4 IN. LONG (58626) 913-67-9-5706-79	EA		4					1	9
X20 00070		PLATE: INSTRUCTION (58626) 913-66-1-1137-79	EA		1					1	20
0 00071	5310-407-9690	NUT, PLAIN, HEXAGON: INSTRUCTION PLATE, MTG, No. 8-32 THD SIZE (58626) 913-67-9-5711-79	EA		4					1	24
0 00072	5305-012-2159	SCREW, ROUND HEAD: INSTRUCTION PLATE, MTG, No. 8-32 THD SIZE, 1/4 IN. LONG (58626) 913-67-9-5707-79	EA		4					1	21
00073		GROUP 50 - PNEUMATIC EQUIPMENT									
00074		5000 - AIR COMPRESSOR ASSEMBLY									
0 00076	5310-275-5552	NUT, PLAIN, HEXAGON: BLOWER TO BASE, 5/16-18 THD SIZE (58626) 913-67-9-5709-79	EA		4					5	1

(1) SMR CODE INDEX NO.	(2) FEDERAL STOCK NUMBER	(3) DESCRIPTION USABLE ON CODE	(4) UNIT OF ISSUE	(5) QTY INC IN UNIT PACK	(6) QTY INC IN UNIT	(7) 15-DAY ORGANIZATIONAL MAINTENANCE ALW				(8) ILLUS- TRATION	
						(a)	(b)	(c)	(d)	(a)	(b)
						1-5	6-20	21-50	51-100	FIG NO.	ITEM NO.
0 00077	5305-875-6354	SCREW, CAP, HEXAGON HEAD: BLOWER TO BASE, 5/16-18 THD SIZE, 1 IN. LONG (58626) 913-67-9-5702-79	EA		4					5	1
0 00078	5310-665-6404	WASHER, FLAT: BLOWER TO BASE, 3/8 IN. SCREW SIZE (58626) 913-67-9-5713-79	EA		4						
0 00079	5310-010-3320	WASHER, LOCK: BLOWER TO BASE, 5/16 IN. SCREW SIZE (58626) 913-67-9-5717-79	EA		4					5	2
00082		5004 - PISTONS, CONNECTING RODS, AND ROTORS									
0 00087		KEY, DRIVE (58626) 900-63-9-9101-02	EA		1					3	16
P 0 00089	4730-102-9729	PLUG, MAGNETIC: GEAR CASE, DRAIN (36540) 400Z9AQ1	EA		1	*	*	*	*	3	19
0 00090		PLUG, PIPE, SQUARE HEAD: GEAR CASE, OIL LEVEL, 1/8-27 NPT (58626) 900-67-9-5806-02	EA		1					3	4
P 0 00091	4730-044-0360	PLUG, VENT: GEAR CASE, OIL FILL, 1/8-27 NPT (85626) 900-63-9-6501-02	EA		1	*	*	*	*	3	1
00103		5007 - COMPRESSOR DRIVE COUPLING									
P 0 00104	4310-044-0361	COUPLING: ENGINE TO BLOWER (71176) JS5H	EA		1	*	*	*	*	2	3
X1 00105		BUSHING SET: BLOWER SHAFT (71176) 59Y1402	EA		1					2	2
P 0 00106	3010-854-4927	INSERT, COUPLING: JAW (71176) JS5	EA		1	*	*	*	2	2	4
X1 00107		JAW SET (71176) SK121366-1	EA		1						
0 00108		KEY, WOODRUFF (58626) 913-66-1-0994-79	EA		1					2	5

(1) SMR CODE <hr/> INDEX NO.	(2) FEDERAL STOCK NUMBER	(3) DESCRIPTION USABLE ON CODE	(4) UNIT OF ISSUE	(5) QTY INC IN UNIT PACK	(6) QTY INC IN UNIT	(7) 15-DAY ORGANIZATIONAL MAINTENANCE ALW				(8) ILLUS- TRATION	
						(a)	(b)	(c)	(d)	(a)	(b)
						1-5	6-20	21-50	51-100	FIG NO.	ITEM NO.
0 00109	5305-331-8032	SCREW CAP: BUSHING SET, 1/4-20 THD SIZE, 3/4 IN. LONG (96906) MS35303-6	EA		4					2	1
00110		5008 - AIR INTAKE FILTER ASSEMBLY									
P 0 00111	4310-014-6861	FILTER, AIR: COMPRESSOR (22313) 14-129	EA		1	*	*	*	*	7	
X1 00112		COVER, BOTTOM (22313) 83-186	EA		1					7	1
X1 00113		COVER, TOP (22313) 83-185	EA		1					7	2
P 0 00114	4310-069-9257	ELEMENT, FILTER (22313) 81-202	EA		1	2	4	8	17	7	3
X1 00115		HOOD, WEATHER (22313) 80-294	EA		1					7	4
0 00116	5310-333-0549	NUT, WING: AIR FILTER, 1/4-20 THD SIZE (22313) 89-103	EA		1					7	5
P 0 00117	5340-062-5466	SPRING, CLIP (22313) 89-101	EA		3	*	*	*	2	7	6
00118		5009 - UNLOADER SYSTEM COMPONENTS									
P 0 00119	4820-068-5900	VALVE, RELIEF: MANIFOLD (34494) 86C11N6PS1G	EA		1	*	*	*	2	6	6
00120		5015 - AIR DISCHARGE SYSTEM									
P 0 00121	4310-014-1398	MANIFOLD: COMPRESSOR (58626) 913-60-3-9378-79	EA		1	*	*	*	*	6	7
P 0 00122	4010-021-4132	CHAIN, BEADED: FITTING (58626) 913-66-1-0800-79	EA		2	*	*	*	*	6	8
P 0 00123	4310-567-1596	COUPLING, BLANK (72661) AMO	EA		2	*	*	*	*	6	9

(1) SMR CODE INDEX NO.	(2) FEDERAL STOCK NUMBER	(3) DESCRIPTION USABLE ON CODE	(4) UNIT OF ISSUE	(5) QTY INC IN UNIT PACK	(6) QTY INC IN UNIT	(7) 15-DAY ORGANIZATIONAL MAINTENANCE ALW				(8) ILLUS- TRATION	
						(a)	(b)	(c)	(d)	(a)	(b)
						1-5	6-20	21-50	51-100	FIG NO.	ITEM NO.
P 0 00124	4730-496-5954	COUPLING, MALE: PIPE END (72661) AM12	EA		2	*	*	*	*	6	10
O 00125		ELBOW, STREET: MANIFOLD, 1-11 1/2 NPT, 90 DEGREE (58626) 913-67-9-5721-79	EA		1					6	11
O 00126		HOOKS (01292) 40	EA		2					6	12
O 00127		NIPPLE, PIPE: MANIFOLD, 1 1/4-11 1/2 NPT (58626) 913-67-9-5722-79	EA		1					6	14
O 00128	5305-849-1021	SCREW, ROUND HEAD: CHAIN, No. 8-32 THD SIZE, 1/2 IN. LONG (58626) 913-67-9-5705-79	EA		1					6	15

(1) SMR CODE INDEX NO.	(2) FEDERAL STOCK NUMBER	(3) DESCRIPTION USABLE ON CODE	(4) UNIT OF ISSUE	(5) QTY INC IN UNIT PACK	(6) QTY INC IN UNIT	(7) 30-DAY DS MAINT ALLOWANCE			(8) 30-DAY GS MAINT ALLOWANCE			(9) 1-YR ALW PER 100 EQUIP CNTGCTY	(10) DEPOT MAINT ALW- PER 100 EQUIP	(11) ILLUS- TRATION		
						(a)	(b)	(c)	(a)	(b)	(c)			(a)	(b)	
						1-20	21-50	51-100	1-20	21-50	51-100			FIG NO.	ITEM NO	
00001		SECTION V - REPAIR PARTS FOR DS, GS, AND DEPOT MAINTENANCE														
00001A		GROUP 01 - ENGINE														
00002		0100 - ENGINE ASSEMBLY														
P O T 00003	2805-072-4871	ENGINE ASSEMBLY (97403) 2A016-3	EA		1	*	*	*	*	*	*	*	*	5	10	
P O 00004	2805-022-2632	BRACKET MOUNT: ENGINE (58626) 913-66-2-0785-79	EA		4	*	*	*	*	*	*	4	12	5	5	
O 00005	5310-194-8189	NUT, PLAIN, HEXAGON: ENGINE MTG, 5/16-18 THD SIZE (58626) 913-67-9-5709-79	EA		16									5	6	
O 00006	5305-068-0513	SCREW, CAP, HEXAGON HEAD: BRACKET, ENGINE, 1/4-20 THD SIZE, 3/4 IN. LONG (58626) 913-67-5703-79	EA		12									5	7	
O 00007	5305-875-6354	SCREW, CAP, HEXAGON HEAD: ENGINE AND BLOWER MTG, 5/16-18 THD SIZE, 1 IN. LONG (58626) 913-67-9-5702-79	EA		16											
O 00008	5310-081-4219	WASHER, FLAT: ENGINE MTG, 5/16 IN. SCREW SIZE (58626) 913-67-9-5713-79	EA		16									5	8	
O 00009	5310-010-3320	WASHER, LOCK: ENGINE MTG, 5/16 IN. SCREW SIZE (58626) 913-67-9-5717-79	EA		16											
O 00010	5310-010-3319	WASHER, LOCK: ENGINE BRACKET MTG, 1/4 IN. SCREW SIZE (58626) 913-67-9-5718-79	EA		16									5	9	
00011		GROUP 03 - FUEL SYSTEM														
00012		0306 - TANKS, LINES, FITTINGS														
P O 00013	2910-013-9119	TANK, FUEL (78252) 661-3-0793-79	EA		1	*	*	*	*	*	*	5	5	1	13	
P O 00014	2910-374-5079	CAP, FUEL: FUEL TANK (78252) 2302J022	EA		1	*	2	2	*	2	2	12	10	5	3	

(1) SMR CODE INDEX NO.	(2) FEDERAL STOCK NUMBER	(3) DESCRIPTION USABLE ON CODE	(4) UNIT OF ISSUE	(5) QTY INC IN UNIT PACK	(6) QTY INC IN UNIT	(7) 30-DAY DS MAINT ALLOWANCE			(8) 30-DAY GS MAINT ALLOWANCE			(9) 1-YR ALW PER 100 EQUIP CNTGCT	(10) DEPOT MAINT ALW- PER 100 EQUIP	(11) ILLUS- TRATION		
						(a)	(b)	(c)	(a)	(b)	(c)			(a)	(b)	
						1-20	21-50	51-100	1-20	21-50	51-100			FIG NO.	ITEM NO	
00056		GROUP - ACCESSORY ITEMS														
00057		2202 - ACCESSORY ITEMS														
P O 00058	4720-071-1749	HOSE ASSEMBLY: COMPRESSOR (58626) 913-66-3-0773-79	EA		2	*	*	2	*	*	2	10	20	6		
P O 00059	4730-908-3193	CLAMP: HOSE (96906) MS35842-12	EA		4	*	*	*	*	*	*	4	*	6	1	
P O 00060	4730-243-1640	COUPLING, FEMALE: HOSE (72661) AM13	EA		2	*	*	*	*	*	*	4	4	6	2	
P O 00061	4720-069-9073	HOSE: COMPRESSOR (81348) ZZH500	EA		2	5	10	21	5	10	21	250	500	6	3	
P O 00062	4730-069-9075	NIPPLE: HOSE (72661) D006-012	EA		4	2	2	4	2	2	4	44	40	6	13	
P O 00063	4310-069-9074	NOZZLE: HOSE (58626) B3703-1	EA		2	*	*	2	*	*	2	10	20	6	4	
P O 00064	5330-505-6186	WASHER: HOSE (72661) AWR4	EA		7	4	7	15	4	7	15	175	700			
X20 00065		STRAP: HOSE (01344) BN2468	EA		1											
P O 00066	4310-690-3486	VALVE: INFLATOR (53477) 9927	EA		2	*	2	2	*	2	2	12	10	6	5	
00067		2210 - DATA PLATES														
X20 00068		PLATE: IDENTIFICATION (58626) 913-66-1-1136-79	EA		1									1	8	
O 00069	5305-016-4359	SCREW, PAN HEAD, SELF-TAPPING: IDENTIFICATION PLATE MTG, No. 8-32 THD SIZE, 1/4 IN. LONG (58626) 913-67-9-5706-79	EA		4									1	9	
X20 00070		PLATE: INSTRUCTION (58626) 913-66-1-1137-79	EA		1									1	20	
O 00071	5310-407-9690	NUT, PLAIN, HEXAGON: INSTRUCTION PLATE, MTG, No. 8-32 THD SIZE (58626) 913-67-9-5711-79	EA		4									1	24	

(1) SMR CODE INDEX NO.	(2) FEDERAL STOCK NUMBER	(3) DESCRIPTION USABLE ON CODE	(4) UNIT OF ISSUE	(5) QTY INC IN UNIT PACK	(6) QTY INC IN UNIT	(7) 30-DAY DS MAINT ALLOWANCE			(8) 30-DAY GS MAINT ALLOWANCE			(9) 1-YR ALW PER 100 EQUIP CNTGCTY	(10) DEPOT MAINT ALW- PER 100 EQUIP	(11) ILLUS- TRATION	
						(a)	(b)	(c)	(a)	(b)	(c)			(a)	(b)
						1-20	21-50	51-100	1-20	21-50	51-100			FIG NO.	ITEM NO
0 00072	5305-012-2159	SCREW, ROUND HEAD: INSTRUCTION PLATE, MTG, No. 8-32 THD SIZE, 1/4 IN. LONG (58626) 913-67-9-5707-79	EA		4									1	21
00073		GROUP 50 - PNEUMATIC EQUIPMENT													
00074		5000 - AIR COMPRESSOR ASSEMBLY													
P F R 00075	4310-068-5899	BLOWER ASSEMBLY: COMPRESSOR (58626) 913-66-3-0844-02	EA		1	*	*	*	*	*	*	5	10	3	
0 00076	5310-275-5552	NUT, PLAIN, HEXAGON: BLOWER TO BASE, 5/16-18 THD SIZE (58626) 913-67-9-5709-79	EA		4									5	1
0 00077	5305-875-6354	SCREW, CAP, HEXAGON HEAD: BLOWER TO BASE, 5/16-18 THD SIZE, 1 IN. LONG (58626) 913-67-9-5702-79	EA		4									5	1
0 00078	5310-665-6404	WASHER, FLAT: BLOWER TO BASE, 3/8 IN. SCREW SIZE (58626) 913-67-9-5713-79	EA		4										
0 00079	5310-010-3320	WASHER, LOCK: BLOWER TO BASE, 5/16 IN. SCREW SIZE (58626) 913-67-9-5717-79	EA		4									5	2
00080		5001 - CRANKCASE, BLOCK, CYLINDER HEAD													
P F 00081	4310-018-2482	CASE IMPELLER: BLOWER ASSEMBLY (58626) 900-66-3-0695-02	EA		1	*	*	*	*	*	*	5	5	3	14
00082		5004 - PISTONS, CONNECTING RODS, AND ROTORS													
P F 00083	2920-718-6194	BEARING BALL: SHAFT ASSEMBLY (43334) Z99503	EA		4	*	2	2	*	2	2	20	200	3	11
P F 00084	4310-018-2485	CASE GEAR: TIMING (58626) 900-66-3-1185-02	EA		1	*	*	*	*	*	*	3	5	3	2
P F 00085	4310-018-2488	HEADPLATE DRIVE (58626) 900-66-3-0693-02	EA		1	*	*	*	*	*	*	5	5	3	15

(1) SMR CODE INDEX NO.	(2) FEDERAL STOCK NUMBER	(3) DESCRIPTION USABLE ON CODE	(4) UNIT OF ISSUE	(5) QTY INC IN UNIT PACK	(6) QTY INC IN UNIT	(7) 30-DAY DS MAINT ALLOWANCE			(8) 30-DAY GS MAINT ALLOWANCE			(9) 1-YR ALW PER 100 EQUIP CNTGCTY	(10) DEPOT MAINT ALW- PER 100 EQUIP	(11) ILLUS- TRATION	
						(a)	(b)	(c)	(a)	(b)	(c)			(a) FIG NO.	(b) ITEM NO
						1-20	21-50	51-100	1-20	21-50	51-100				
P F 00086	4310-018-2486	HEADPLATE, GEAR (58626) 900-66-3-0694-02	EA		1	*	*	*	*	*	*	5	5	3	5
O 00087		KEY, DRIVE (58626) 900-63-9-9101-02	EA		1									3	16
F 00088		PIN, DOWEL (58626) 900-67-9-5807-02	EA		8									3	12
P O 00089	4730-102-9729	PLUG, MAGNETIC: GEAR CASE, DRAIN (36540) 40029AQ1	EA		1	*	*	*	*	*	*	5	5	3	19
O 00090		PLUG, PIPE, SQUARE HEAD: GEAR CASE, OIL LEVEL, 1/8-27 NPT (58626) 900-67-9-5806-02	EA		1									3	4
P O 00091	4730-044-0360	PLUG, VENT: GEAR CASE, OIL FILL, 1/8-27 NPT (85626) 900-63-9-6501-02	EA		1	*	*	*	*	*	*	5	5	3	1
X2F 00092		RETAINER, BEARING (58626) 900-63-3-0696-02	EA		1									3	7
X2F 00093		RETAINER, SPRING (58626) 900-66-3-0780-02	EA		1									3	17
F 00094	5305-207-2618	SCREW, CAP, HEXAGON HEAD: HEAD PLATE, 1/4-20 THD SIZE, 1 5/8 IN. LONG (58626) 900-67-9-5802-02	EA		20									3	6
F 00095	5305-846-0131	SCREW, CAP, SOCKET HEAD: GEAR CASE, No. 10-24 THD SIZE, 5/8 IN. LONG (58626) 900-67-9-5803-02	EA		18									3	3
F 00096	5305-957-1316	SETSCREW, SOCKET HEAD: BEARING ADJUSTMENT, No. 10-32 THD SIZE, 5/16 IN. LONG (58626) 900-67-9-5801-02	EA		4									3	10
P F 00097	4310-018-2483	SHAFT ASSEMBLY, LONG: IMPELLER (58626) 900-66-3-0690-02	EA		1	*	*	*	*	*	*	3	5	3	13
P F 00098	4310-018-2484	SHAFT ASSEMBLY, SHORT: IMPELLER (58626) 900-66-3-0691-02	EA		1	*	*	*	*	*	*	3	5	3	20
P F 00099	5310-965-1758	WASHER, SPRING, WAVY (58626) WB40	EA		2	2	2	2	2	2	2	28	50	3	18

(1) SMR CODE INDEX NO.	(2) FEDERAL STOCK NUMBER	(3) DESCRIPTION USABLE ON CODE	(4) UNIT OF ISSUE	(5) QTY INC IN UNIT PACK	(6) QTY INC IN UNIT	(7) 30-DAY DS MAINT ALLOWANCE			(8) 30-DAY GS MAINT ALLOWANCE			(9) 1-YR ALW PER 100 EQUIP CNTGCTY	(10) DEPOT MAINT ALW- PER 100 EQUIP	(11) ILLUS- TRATION	
						(a)	(b)	(c)	(a)	(b)	(c)			(a)	(b)
						1-20	21-50	51-100	1-20	21-50	51-100			FIG NO.	ITEM NO
P 0 00114	4310-069-9257	ELEMENT, FILTER (22313) 81-202	EA		1	8	17	33	8	17	33	400	100	7	3
X1 00115		HOOD, WEATHER (22313) 80-294	EA		1									7	4
0 00116	5310-333-0549	NUT, WING: AIR FILTER, 1/4-20 THD SIZE (22313) 89-103	EA		1									7	5
P 0 00117	5340-062-5466	SPRING, CLIP (22313) 89-101	EA		3	*	2	2	*	2	2	12	20	7	6
00118		5009 - UNLOADER SYSTEM COMPONENTS													
P 0 00119	4820-068-5900	VALVE, RELIEF: MANIFOLD (34494) 86C11N6PS1G	EA		1	*	2	2	*	2	2	12	20	6	6
00120		5015 - AIR DISCHARGE SYSTEM													
P 0 00121	4310-014-1398	MANIFOLD: COMPRESSOR (58626) 913-60-3-9378-79	EA		1	*	*	*	*	*	*	3	5	6	7
P 0 00122	4010-021-4132	CHAIN, BEADED: FITTING (58626) 913-66-1-0800-79	EA		2	*	*	*	*	*	*	4	4	6	8
P 0 00123	4310-567-1596	COUPLING, BLANK (72661) AM0	EA		2	*	*	*	*	*	*	5	5	6	9
P 0 00124	4730-496-5954	COUPLING, MALE: PIPE END (72661) AM12	EA		2	*	*	*	*	*	*	5	5	6	10
0 00125		ELBOW, STREET: MANIFOLD, 1-11 1/2 NPT, 90 DEGREE (58626) 913-67-9-5721-79	EA		1									6	11
0 00126		HOOCS (01292) 40	EA		2									6	12
0 00127		NIPPLE, PIPE: MANIFOLD, 1 1/4-11 1/2 NPT (58626) 913-67-9-5722-79	EA		1									6	14
0 00128	5305-849-1021	SCREW, ROUND HEAD: CHAIN, No. 8-32 THD SIZE, 1/2 IN. LONG (58626) 913-67-9-5705-79	EA		1									6	15

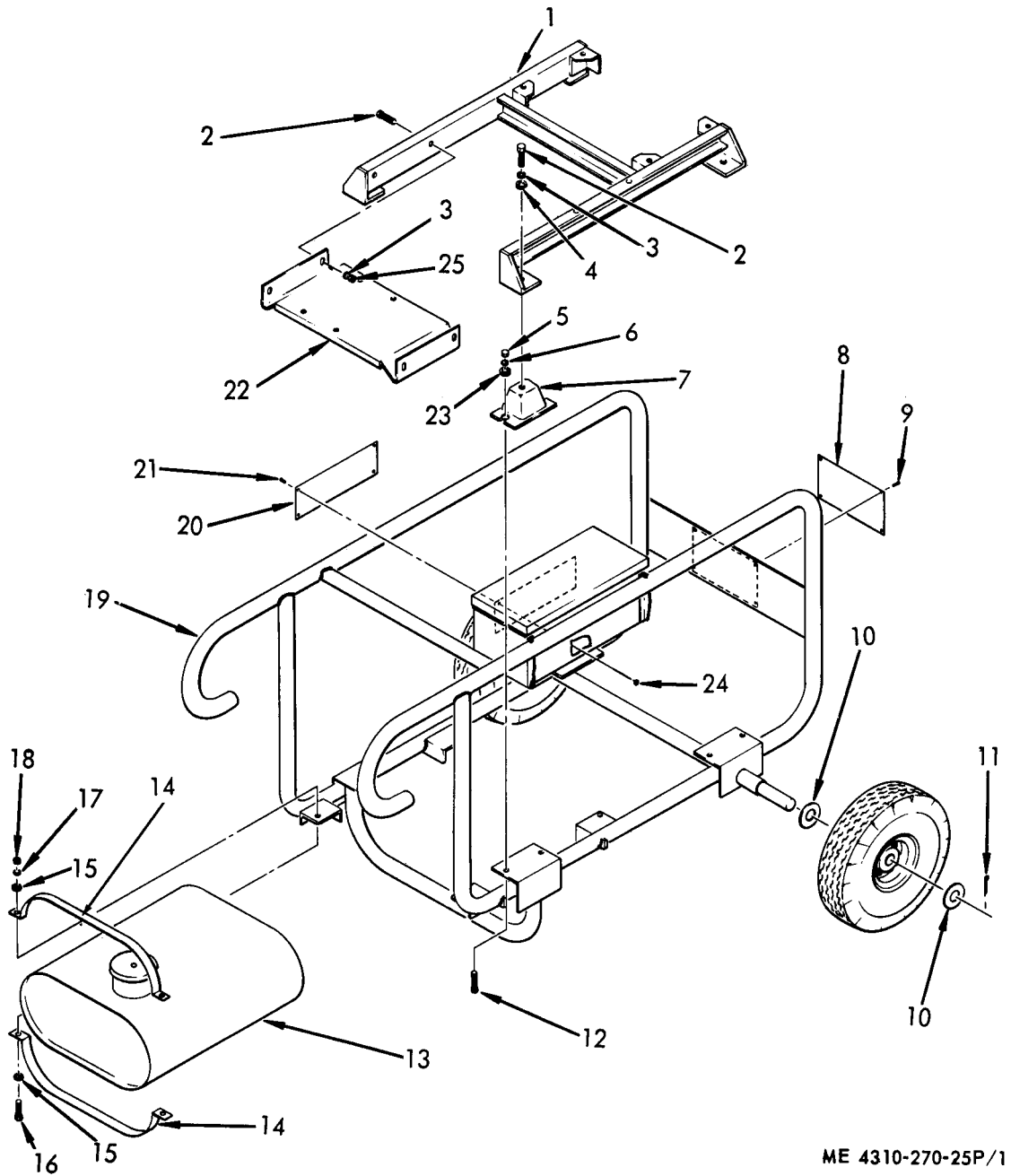


Figure No. 1 Frame

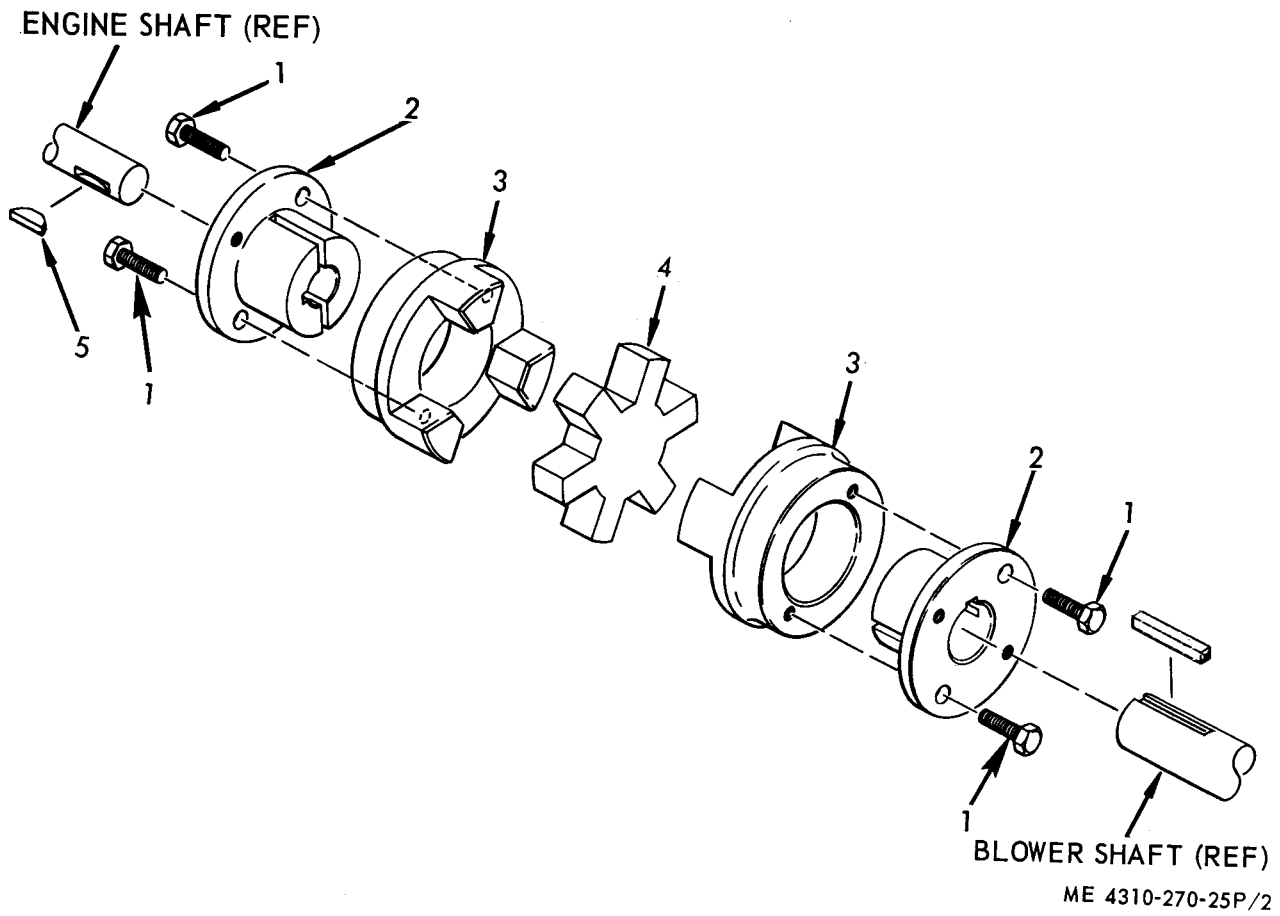
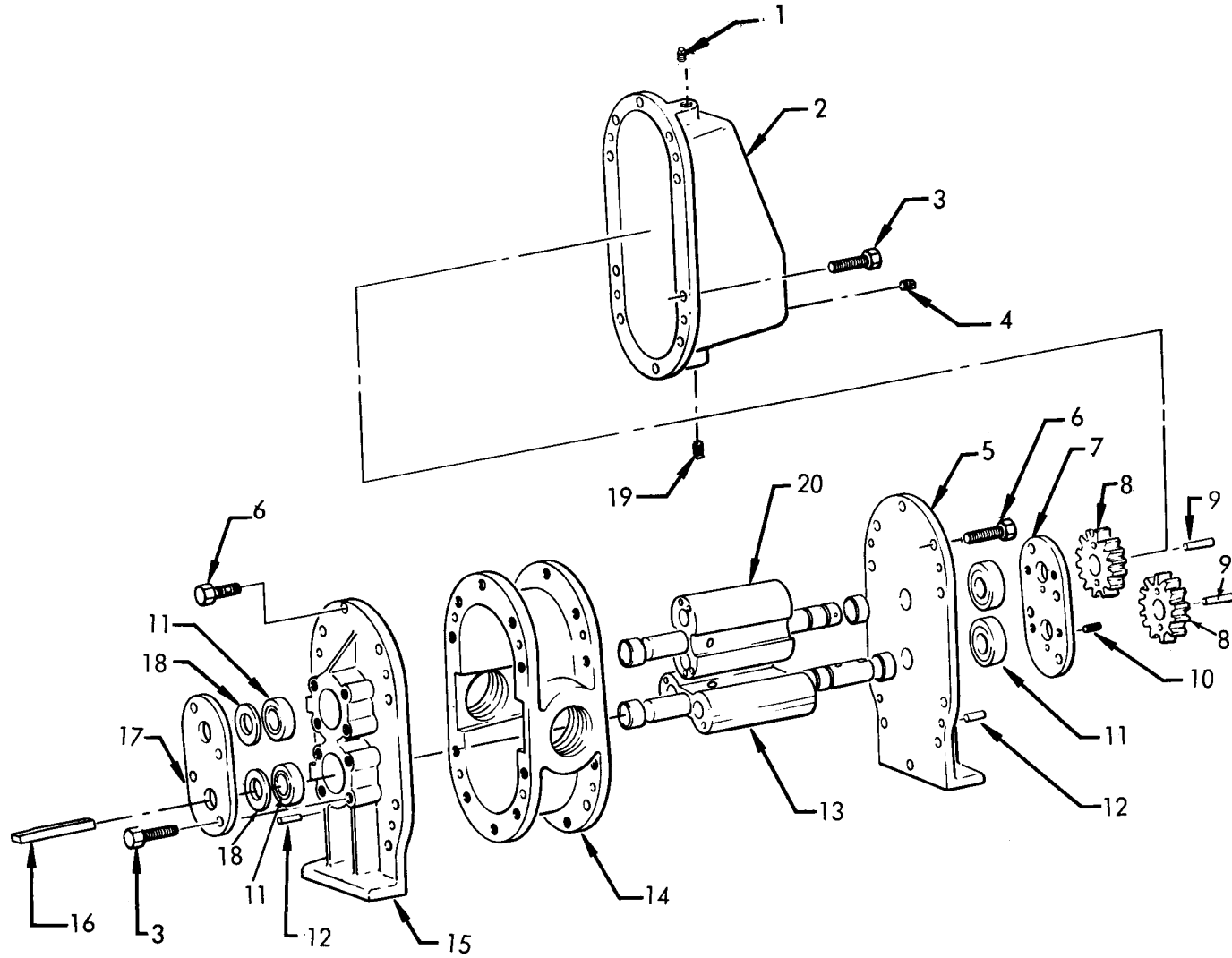
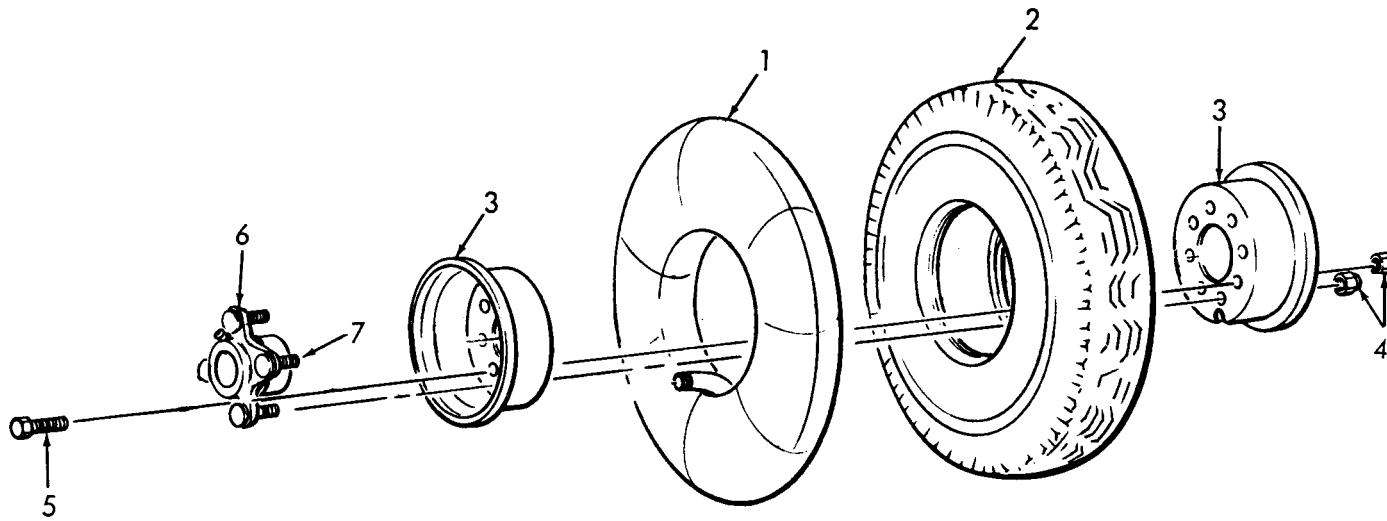


Figure No. 2 Coupling



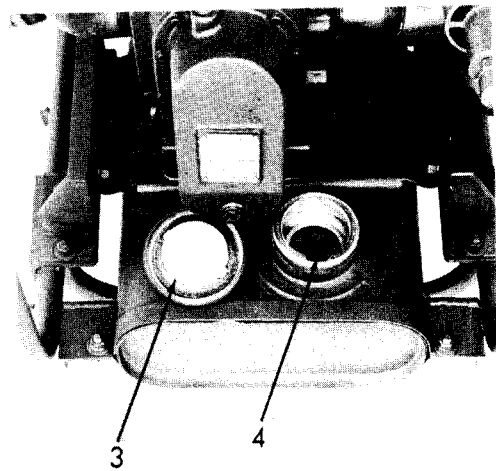
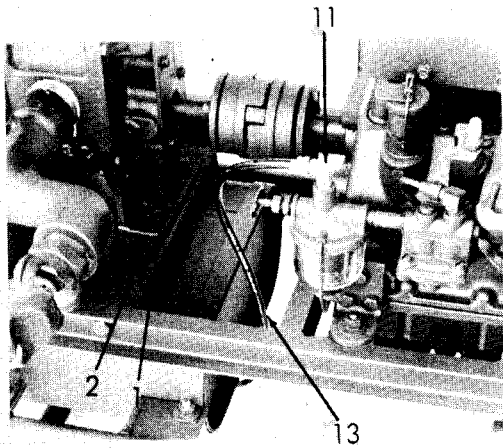
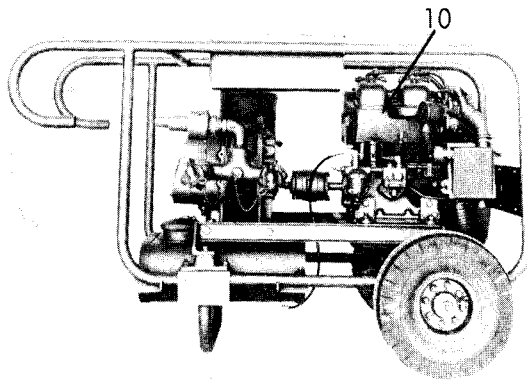
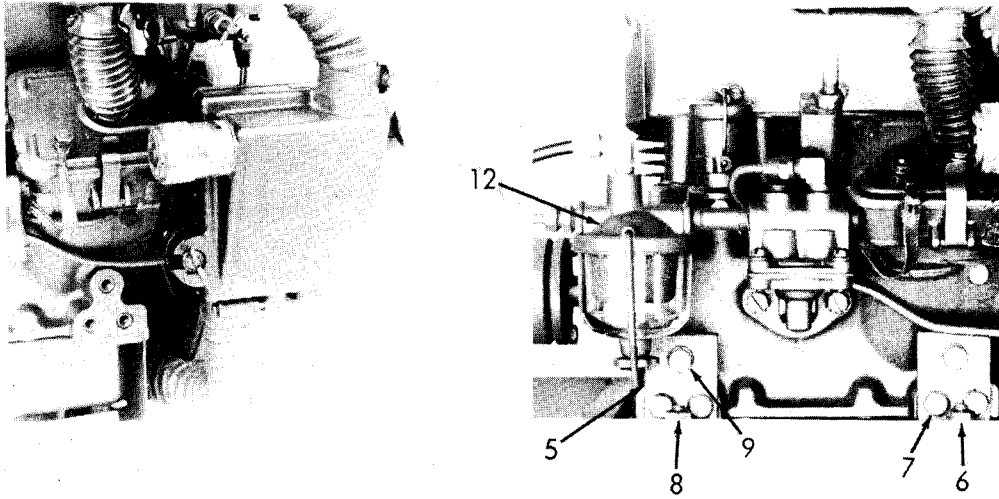
ME 4310-270-25P/3

Figure No. 3 Blower



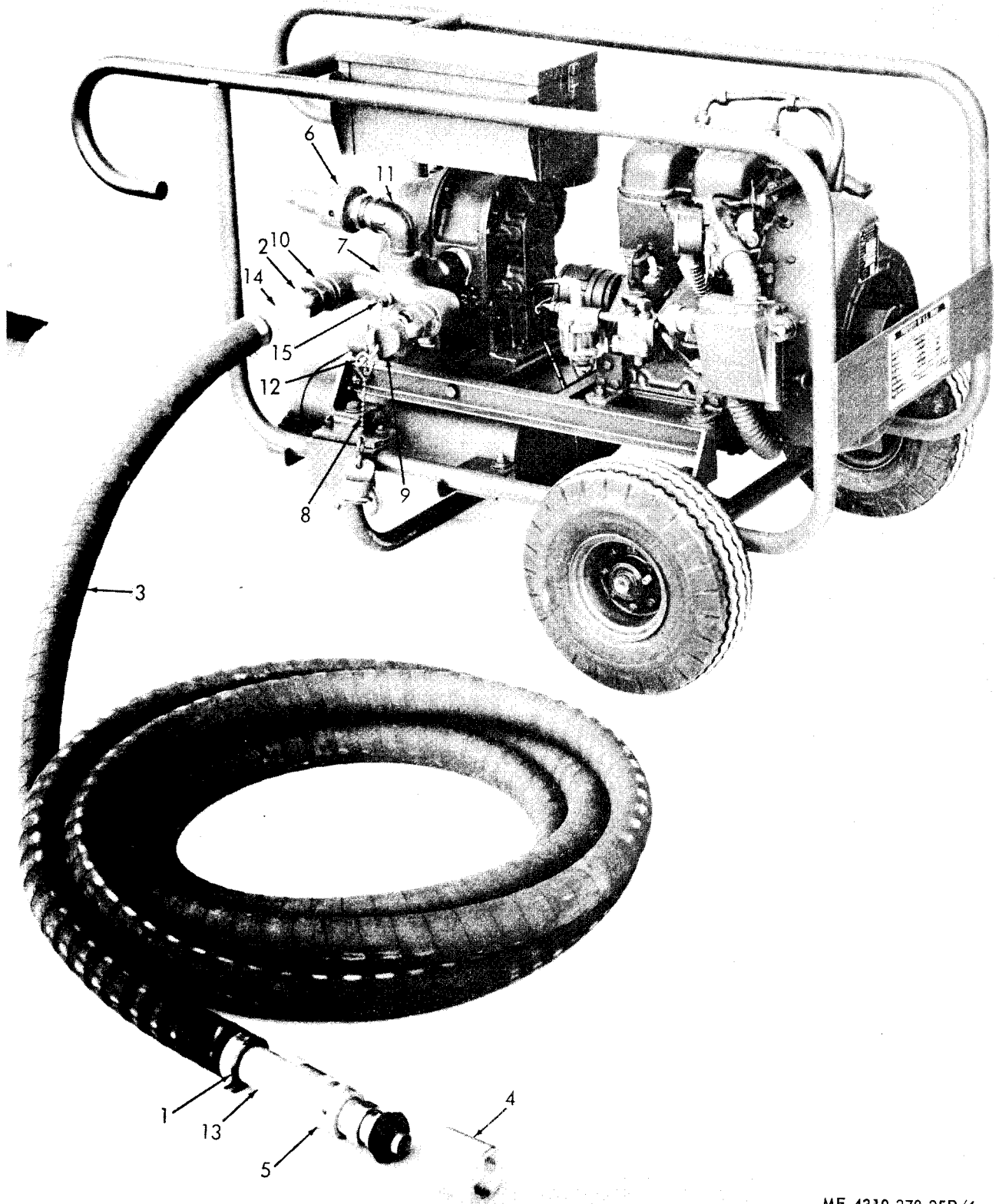
ME 4310-270-25P/4

Figure No. 4 Wheel



ME 4310-270-25P/5

Figure No. 5 Compressor



ME 4310-270-25P/6

Figure No. 6 Hose And Nozzle Fitting

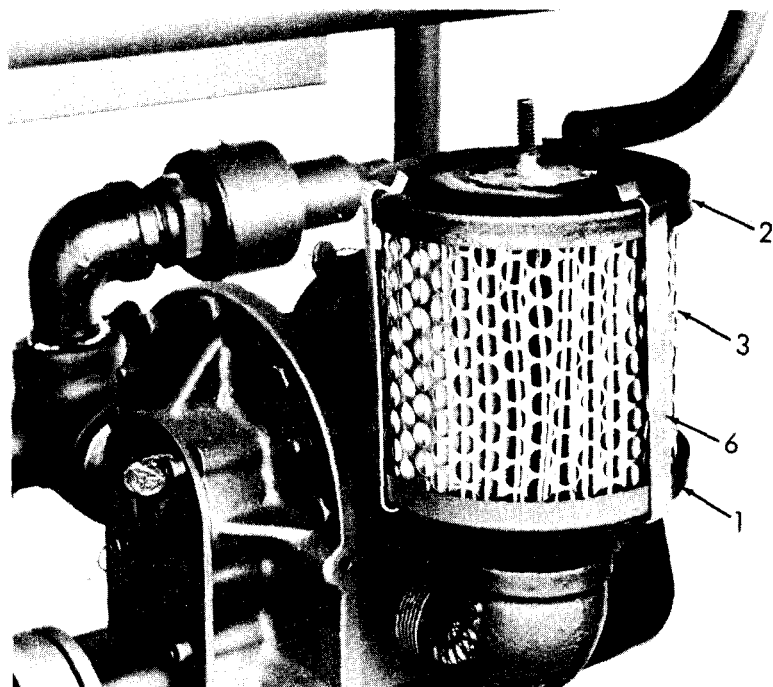
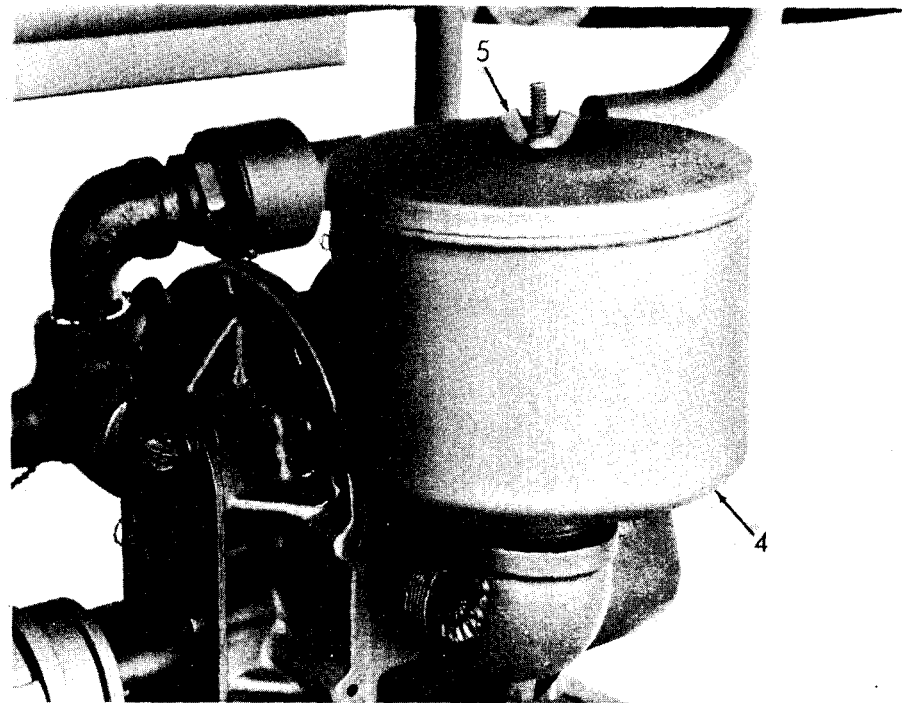


Figure No. 7 Air Filter

ME 4310-270-25P/7

Section VII. INDEX-FEDERAL STOCK NUMBER AND REFERENCE NUMBER
 CROSS-REFERENCE TO INDEX NUMBER

<u>REFERENCE No.</u>	<u>MFG CODE</u>	<u>INDEX No.</u>	<u>REFERENCE No.</u>	<u>MFG CODE</u>	<u>INDEX No.</u>
AMO	72661	00123	913-67-9-5708-79	58626	00052
AM12	72661	00124	913-67-9-5709-79	58626	00005
AM13	72661	00060			00044
AWR4	72661	00064			00076
BN2468	01344	00065	913-67-9-5710-79	58626	00021
B3703-k	58626	00063	913-67-9-5711-79	58626	00071
D006 -012	72661	00062	913-67 -9-5712-79	58626	00047
FB470	34256	00043	913-67-9-5713-79	58626	00008
H2	73808	00031			00048
H2 -6A	89341	00035	913-67-9-5713-79	58626	00078
JS 5H	71176	00104	913-67-9-5714-79	58626	00023
MS35303-6	96906	00109	913-67-9-5715-79	58626	00039
MS35389-40	96906	00037	913-67-9-5716-79	58626	00049
MS35392-121	96906	00038			00079
MS35842-12	96906	00059	913-67-9-5718-79	58626	00010
MS51086-1	96906	00015			00024
R4-6A	89341	00034	913 -67-9 -5719-79	58626	00032
R4-6B	89341	00036	913-67 -9-5721-79	58626	00125
R4	73808	00033	913-67-9-5722-79	58626	00127
SKL21366-1	71176	00107	913-67-9-5900-79	58626	00030
WB40	58626	00099	913-67 -9-6000-79	30327	00016
ZZH500	81348	00061	913-67 -9-6001-79	30327	00018
Z99503	43334	00083	913-67J	58626	00009
13-67-9-5716-79	86269	00545	9927	53477	00066
14-129	22313	00111			
2A0163	87403	00003			
2302J022	78252	00014			
2343B052	78252	00019			
269F	30327	00017			
40	01232	00126			
400Z9AQI	36540	00089			
59Y1402	71176	00105			
661-3-0793-79	78252	00013			
80-294	22313	00115			
81-202	22313	00114			
82-185	22313	00113			
83-185	22313	00112			
86CLIN6PS1G	34494	00119			
89-101	22313	00117			
89-103	22313	00116			
900-63-30696-02	58626	00092			
900-63-9-6501-02	85626	00091			
900-63-9-9101-02	58626	00087			
900-66-3-0690-02	58626	00097			
900-66-3-0691-02	58626	00098			
900-66-3-0693-02	58626	00085			
900-66-3-0694-02	58626	00086			
900-66-3-0695-02	58626	00081			
900-66-3-0780-02	58626	00093			
900-66-3-1185-02	58626	00084			
900-67-9-2101-02	58626	00101			
900-67-9-5801-02	58626	00096			
900-67-9-5802-02	58626	00094			
900-67-9-5803-02	58626	00095			
900-67-9-5806-02	58626	00090			
900-67-9-5807-02	58626	00088			
900-67-9-5808-02	58626	00102			
913-60-3-9378-79	58626	00121			
913-66-0706-79	58626	00051			
913-66 -1-0793-79	78252	00013			
913-66-1-0800-79	58626	00122			
913-66-1-0994-79	58626	00108			
913-66 -1-1136-79	58626	00068			
913-66 -1-1137 -79	58626	00070			
913-66 -1-1156-79	58626	00027			
913-66-2-0785-79	58626	00004			
913-66-3-0773-79	58626	00058			
913-66-3-0790-90	58626	00020			
913-66 -3-0844-02	58626	00075			
913-66 -4-0714-79	58626	00042			
913-66-4-0715-79	58626	00055			
913-67-5703-79	58626	00006			
913-67-5717-79	58626	00050			
913-67-9-5701-70	58626	00053			
913-67-9-5701-79	58626	00046			
913-67-9-5702-79	58626	00007			
		00045			
913-67-9-5702-79	58626	00077			
913-67-9-5704-79	58626	00022			
913-67-9-5705-79	58626	00128			
913-67-9-5706-79	58626				
913-67-9-5707-79	58626				

Section VII. INDEX- FEDERAL STOCK NUMBER AND REFERENCE NUMBER
 CROSS-REFERENCE TO INDEX NUMBER

<u>STOCK NUMBER</u>	<u>INDEX NUMBER</u>
2610-174-1792	00038
2610-528-9697	00037
2805-022-2632	00004
2805-072-4871	00003
2910-013-9119	00013
2910-058-6546	00019
2910-101-4803	000
2910-101-4795	00016
2910-374-5079	00014
2910-905-9792	00015
2920-718-6194	00083
3010-854-4927	00106
4010-021-4132	00122
4310-014-1398	00121
4310-014-6860	00101
4310-014-6861	00111
4310-018-2482	00081
4310-018-2483	00097
4310-018-2484	00098
4310-018-2485	00084
4310-018-2486	00086
4310-044-0361	00104
4310-068-5899	00075
4310-069-9074	00063
4310-069-9257	00114
4310-690-3486	00066
4720-069-9073	00061
4720-071-1749	00058
4730-044-0360	00091
4730-069-9075	00062
4730-102-9729	00089
4820-068-5900	00119
5305-012-2159	00072
5305-016-4359	00069
5305-061-0358	00046
	00053
5305-068-0513	00006
5305-207-0912	00022
5305-207-2618	00094
5305-331-8032	00109
5305-846-0131	00095
5305-849-1021	00128
5305-875-6354	00007
	00045
	00077
5305-957-1316	00096
5306-225-9086	00034
5306-825-0892	00035
5310-010-3319	00010
	00024
5310-010-3320	00009
	00050
	00079
5310-081-4219	00008
	00048
5310-141-1795	00023
5310-188-4118	00036
5310-194-8189	00005
	00044
5310-208-5226	00052
5310-261-7340	00049
	00545
5310-275-5552	00076
5310-298-9226	00039
5310-333-0549	00116
5310-407-9690	00071
5310-655-6404	00047
5310-665-6404	00078
5310-761-6882	00021
5310-965-1758	000
5315-223-6120	00032
5330-505-6186	00064
5340-017-6167	00043
5340-062-5466	00117

By Order of the Secretary of the Army:

W. C. WESTMORELAND,
General, United States Army,
Chief of Staff.

Official:

KENNETH G. WICKHAM,
Major General, United States Army,
The Adjutant General.

Distribution:

To be distributed in accordance with DA Form 12-25, Sec I (qty rqr Block #30), Organizational maintenance requirements for air compressors, 60 CFM.

TM 5-4310-270-25P COMPRESSOR, ROTARY, POWER DRIVEN, AIR-1969